



 **DIRECT**
LED FRAMES
manufacturer of innovative SEG frames

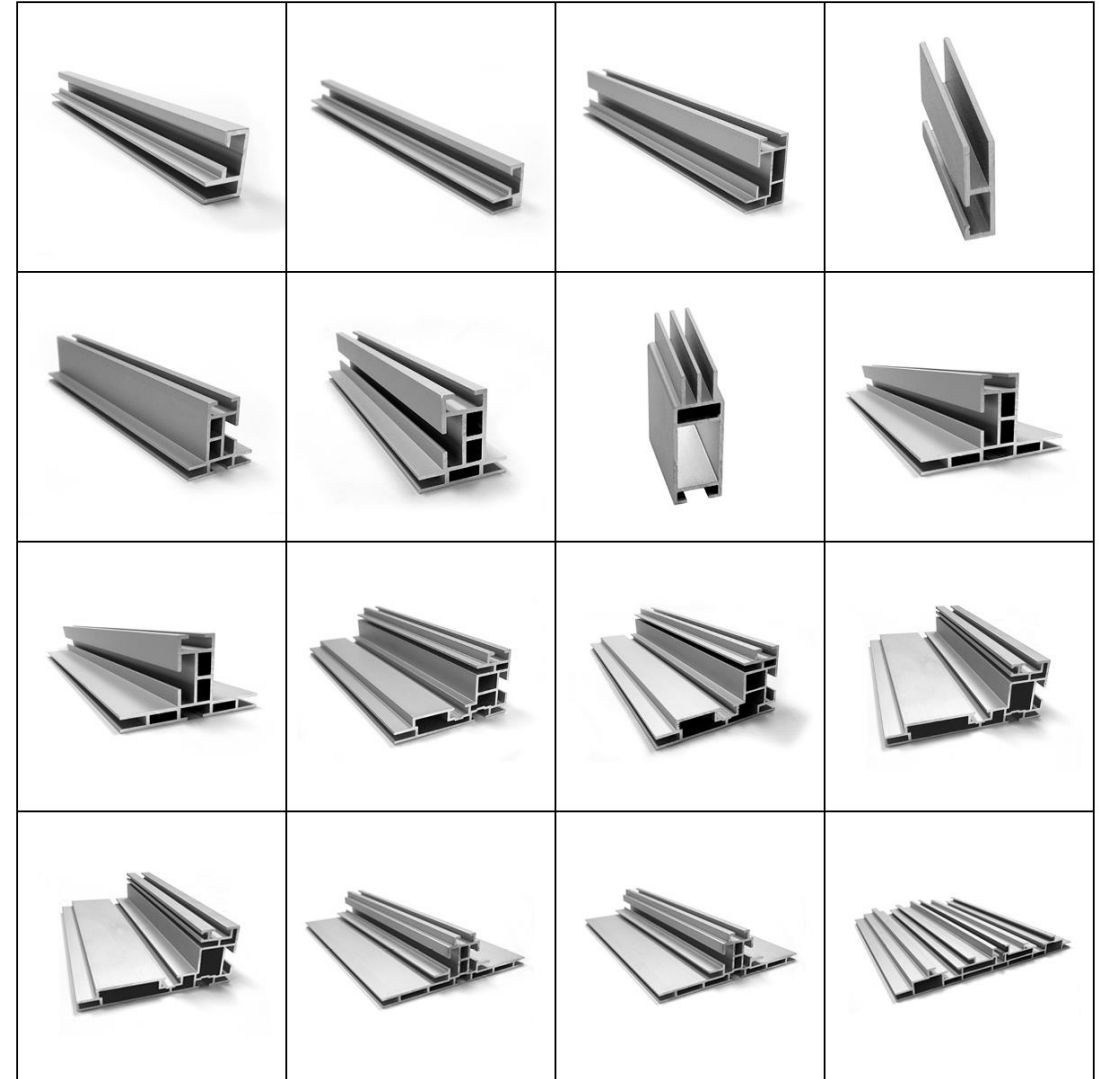
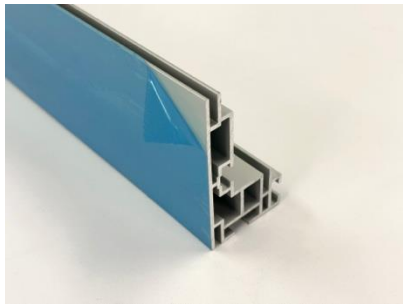
ABOUT

- Supplying SEG to the Industry Since 2012
- Fast Service, In-Stock
- Quick Quotes & Easy Ordering
- Secure Packaging
- Factory-direct wholesale pricing to the trade only
- Based in Southern CA
- Every order is double checked to assure accuracy



SEG PROFILES

- Aluminum extrusions for SEG fabric graphics
- Multiple profile styles for versatile applications
- Anodized silver, matte black and gloss white finishes
- Select extrusions supports edge-lit LED lighting
- Custom lengths available, up to 18.5'
- Protective film/plastic on all SEG profiles
- In stock and ready to ship



BEST SELLING SEG PROFILES

#15 & #19 1-Sided Economy Non-lit SEG Frame

- **Application:** Wall Mount
- **Depth:** #15 - 5/8" & #19 - 3/4"
- **Length:** 18.5' uncut (unlimited with butt join)
- #15 available in Silver
- #19 available in Silver, Matte Black, & Gloss White
- Designed for non-lit SEG graphics
- Economical shipping and easy assembly
- Budget-friendly solution
- Wall mount brackets available



#27 – 1-Sided Non-lit SEG Frame

- **Application:** Hanging or Wall Mount
- **Depth:** 1-1/16"
- **Length:** 18.5' uncut
- **Color Options:** Silver, Matte Black, and Gloss White
- Most versatile 1-sided non-lit SEG profile
- Heavy-duty hardware available for secure installations
- Corner stabilizers and support bars available for large frames
- 180° connectors enable unlimited size expansion
- Knock-down design allows for easy transport
- Built-in groove for support bars and hanging hardware
- Acoustic panel compatibility



#44 & #45 2-Sided Non-lit SEG Frame

- **Application:** Freestanding, Hanging or Wall Mount
- **Depth:** 1-3/4"
- **Length:** 18.5' uncut
- **Color Options:** Silver, Matte Black, and Gloss White
- 3 optional flat feet or with vertical support feet
- Corner and support bars for large-size builds
- Ceiling hanger compatible for suspended display
- Knock-down frame for economical shipping
- Includes external groove for accessories
- #45 is identical to #44, except no outside groove



#79, #80 & #81 SEG Frame

- **Applications:** Freestanding or Hanging
- **Depth:** #79 and #80: 3-1/8" #81: 3-3/8"
- **Length:** 18.5' uncut
- **Color Options:** #79 and #80 Silver and Matte Black, #81 Silver
- #80 (2-Sided) Multi-channel profile for SEG graphics
- #79 Identical to #80 but with no outside groove-smooth surface finish
- #81 (Concealed Corner) Compatible with #79 and #80 designed for concealed corners for a clean finish
- LEDs direct mounted on stabilizer
- #81 can accommodate a non-lit back graphic
- White block-out layer recommended in #81 for optimal light dispersion
- Acoustic panel compatibility



#90 & #91 1-Sided LED SEG Lightbox

- **Application:** Freestanding, Hanging or Wall Mount
- **Depth:** 3-5/8"
- Unlimited size with extendable support bars & corner stabilizers
- **Color Options:** Silver, Matte Black, and Gloss White
- All electrical components are UL-listed, and the low-profile power sources fit seamlessly into the back channel for a clean setup.
- Dimmable and options for custom ambiance
- Edge-lit lightbox solution with uniform light diffusion for vibrant graphics
- #91 is identical to #90, except no outside groove
- Acoustic panel compatibility



#143 & #144 2-Sided LED SEG Lightbox

- **Application:** Freestanding or Hanging
- **Depth:** 5-5/8"
- **Color Options:** Silver and Matte Black
- Unlimited size with extendable support bars & corner stabilizers
- Has minimal depth for 2-sided backlit SEG graphics
- Low-profile power sources eliminate shadows when installed within the frame
- #144 is identical to #143, except no outside groove



WOOD SEG FRAMES

- 100's of wood mouldings to choose from
- With or without LED lighting
- Easy graphic change outs
- Some wood frames can be notched out with SEG channel
- Custom sizes available



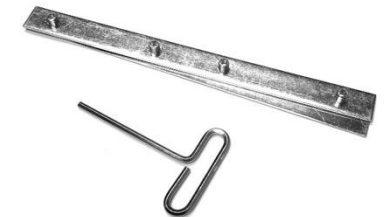
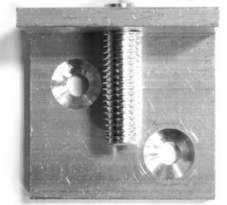
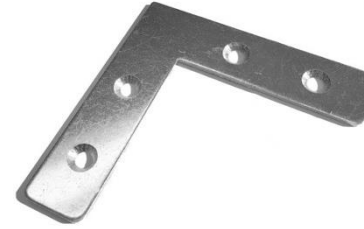
TOOL-FREE SEG CUBES & TOWERS

- Six-sided display showcases graphics on all six faces
- Quick and easy setup without the need for tools
- Non-Lit: Cost-effective solution for environments with sufficient ambient lighting
- Backlit: Even LED illumination ensures consistent brightness across graphics
- Suitable for freestanding or suspended installations.
- Towers offer tall structures that draw attention
- Perfect for retail displays, showrooms, lobbies, & trade shows



ACCESSORIES

- **Corner Hardware:** Available in small and large sizes to suit various frame models, ensuring secure connections
- **Wall Mounts:** Options include basic and heavy-duty mounts, compatible with frames like #15, #19, #27, and #44
- **Ceiling Mounts & Pendants:** Designed for overhead installations, suitable for frames such as #27 and #44
- **Feet Options:** Includes slimline steel feet and feet with vertical support for freestanding displays
- **Stabilizer Bars:** Enhance frame rigidity; models like #20 and #21 support frames such as #27, #44, and #200
- **Connectors:** Includes 180° and 90° connectors, slide-in connectors, and expansion connectors for versatile frame assembly



ACCESSORIES

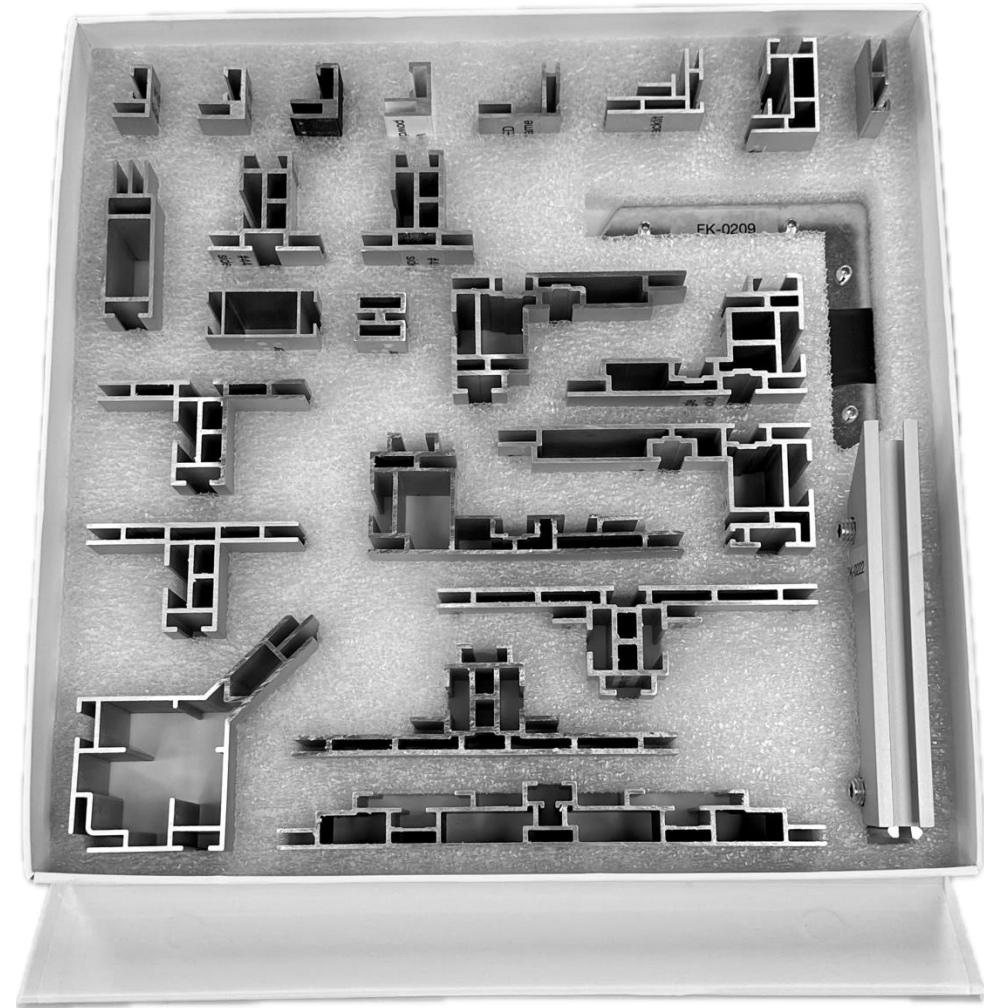
- **LED Light Strips:** Flexible strips suitable for edge lighting applications, economy, regular, and high-output options, custom manufactured to your specifications
- **Power Supplies / LED Drivers:** Various wattages available to power different lighting setups
- **Remote Dimmers:** Dimmable for custom ambiance, and on/off capability
- All electrical components are UL-listed, and the low-profile power sources fit seamlessly into the back channel for a clean setup



FREE SAMPLE KIT

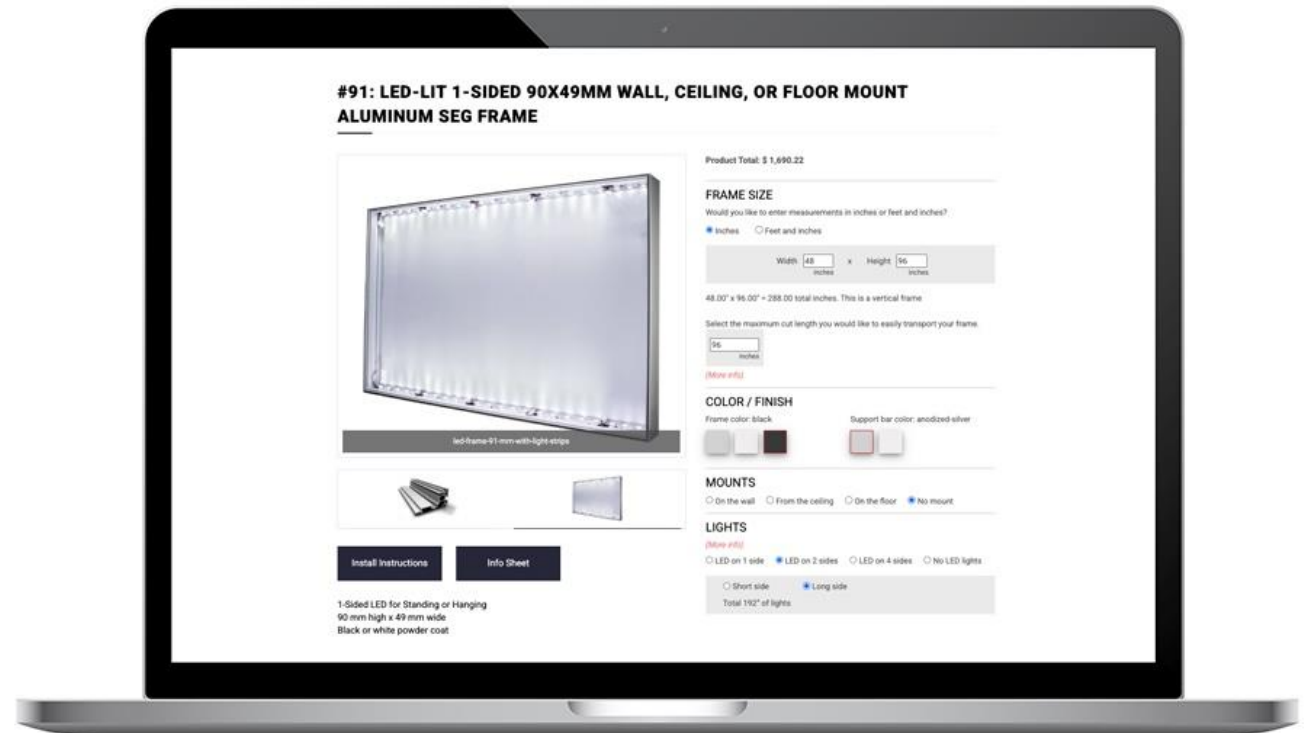
Unbox the full SEG Experience with:

- A complete extrusion sample box featuring all our SEG profiles
- A sample-size lit or unlit frame in the profile & color of your choice
- See it. Feel it. Know it.



24/7 ONLINE QUOTING & ORDERING

- Fill out our trade application to gain access
- Fast, simple quoting process through our website
- Upload your specs for quick turnaround
- Easy online order placement for trade partners
- Responsive support from start to finish



SEG PROJECTS









IN A CULTURE OF POSSIBILITY

SUCCESS NEVER LOOKS LIKE A STRAIGHT LINE.

vmware.com/possible

vmware
REAL IS WHAT'S POSSIBLE





CONTACT + SUPPORT



Matt Dickey

Mobile: 323.493.5797

matt@directLEDframes.com

Direct LED Frames

1398 Poinsettia Ave, Suite 101
Vista, California 92081

Phone: 760.598.5888

www.directLEDframes.com

**Thank you for your interest!
Let's build your next
display together.**

Reach out for quotes, questions, or collaboration.